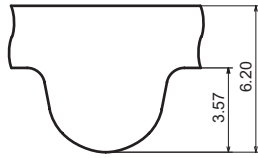
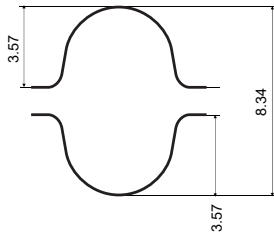


H series H8M



Belt tooth pitch 8mm



Belt tooth pitch 8mm

● Product Code

800

H8M

30

Belt pitch length(mm)

Tooth Profile

Nominal width(mm)

Belt width lineup Table 1-78

Belt weight per unit (kg/10mm x 1m) Table 1-79

Nominal width	Width (mm)
20	20.0
30	30.0
50	50.0
85	85.0

Material	Tooth Profile	Belt weight
rubber	H8M	0.064

1
Properties



Standard belt size table

Product Code	Number of teeth	Belt Pitch length(mm)	Manufacturable Size
424H8M	53	424	S
480H8M	60	480	S
536H8M	67	536	S · D
560H8M	70	560	S · D
592H8M	74	592	S · D
600H8M	75	600	S · D
624H8M	78	624	S · D
632H8M	79	632	S · D
640H8M	80	640	S · D
656H8M	82	656	S · D
680H8M	85	680	S · D
720H8M	90	720	S · D
760H8M	95	760	S · D
776H8M	97	776	S · D
800H8M	100	800	S · D
840H8M	105	840	S · D
856H8M	107	856	S · D
880H8M	110	880	S · D
896H8M	112	896	S · D
912H8M	114	912	S · D
920H8M	115	920	S · D
936H8M	117	936	S · D
960H8M	120	960	S · D
968H8M	121	968	S · D
1000H8M	125	1000	S · D
1040H8M	130	1040	S · D
1056H8M	132	1056	S · D
1064H8M	133	1064	S · D
1080H8M	135	1080	S · D
1120H8M	140	1120	S · D
1128H8M	141	1128	S · D
1152H8M	144	1152	S · D
1160H8M	145	1160	S · D
1200H8M	150	1200	S · D
1224H8M	153	1224	S · D

Table 1-80

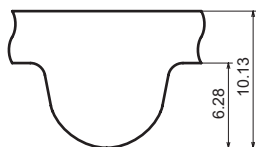
Product Code	Number of teeth	Belt Pitch length(mm)	Manufacturable Size
1248H8M	156	1248	S · D
1280H8M	160	1280	S · D
1304H8M	163	1304	S · D
1320H8M	165	1320	S · D
1360H8M	170	1360	S · D
1392H8M	174	1392	S · D
1400H8M	175	1400	S · D
1424H8M	178	1424	S · D
1432H8M	179	1432	S · D
1440H8M	180	1440	S · D
1480H8M	185	1480	S · D
1520H8M	190	1520	S · D
1600H8M	200	1600	S · D
1680H8M	210	1680	S · D
1696H8M	212	1696	S · D
1728H8M	216	1728	S · D
1760H8M	220	1760	S · D
1800H8M	225	1800	S · D
1896H8M	237	1896	S · D
1904H8M	238	1904	S · D
1936H8M	242	1936	S · D
2000H8M	250	2000	S · D
2080H8M	260	2080	S · D
2104H8M	263	2104	S · D
2160H8M	270	2160	S · D
2240H8M	280	2240	S · D
2272H8M	284	2272	S · D
2400H8M	300	2400	S · D
2504H8M	313	2504	S · D
2600H8M	325	2600	S · D
2800H8M	350	2800	S · D
3048H8M	381	3048	S · D
3200H8M	400	3200	S · D
3280H8M	410	3280	S · D
3600H8M	450	3600	S · D

● S=Single-sided D=Double timing belt

● The design procedure and the defined drive capacity of single-sided timing belts are applied to the equivalent double-sided timing belts.

● Some sizes may not be in stock. Please contact us for the stock status before placing an order.

H series H14M



Belt tooth pitch 14mm

● Product Code

1610

H14M

40

Belt pitch length(mm)

Tooth Profile

Nominal width(mm)

Belt width lineup Table 1-81

Belt weight per unit (kg/10mm x 1m) Table 1-82

Nominal width	Width (mm)
40	40.0
55	55.0
85	85.0
115	115.0

Material	Tooth Profile	Belt weight
rubber	H14M	0.100

1
Properties

Standard belt size table

Table 1-83

Product Code	Number of teeth	Belt Pitch length(mm)
784H14M	56	784
826H14M	59	826
924H14M	66	924
966H14M	69	966
1148H14M	82	1148
1190H14M	85	1190
1344H14M	96	1344
1400H14M	100	1400
1456H14M	104	1456
1512H14M	108	1512
1540H14M	110	1540
1568H14M	112	1568
1610H14M	115	1610
1638H14M	117	1638
1652H14M	118	1652
1680H14M	120	1680
1736H14M	124	1736
1778H14M	127	1778
1890H14M	125	1890
1932H14M	138	1932
1946H14M	139	1946
2002H14M	143	2002
2100H14M	150	2100
2198H14M	157	2198
2310H14M	165	2310
2450H14M	175	2450
2590H14M	185	2590
2940H14M	210	2940
3150H14M	225	3150
3500H14M	250	3500
4578H14M	327	4578

●Some sizes may not be in stock. Please contact us for the stock status before placing an order.